

# JELD WEN

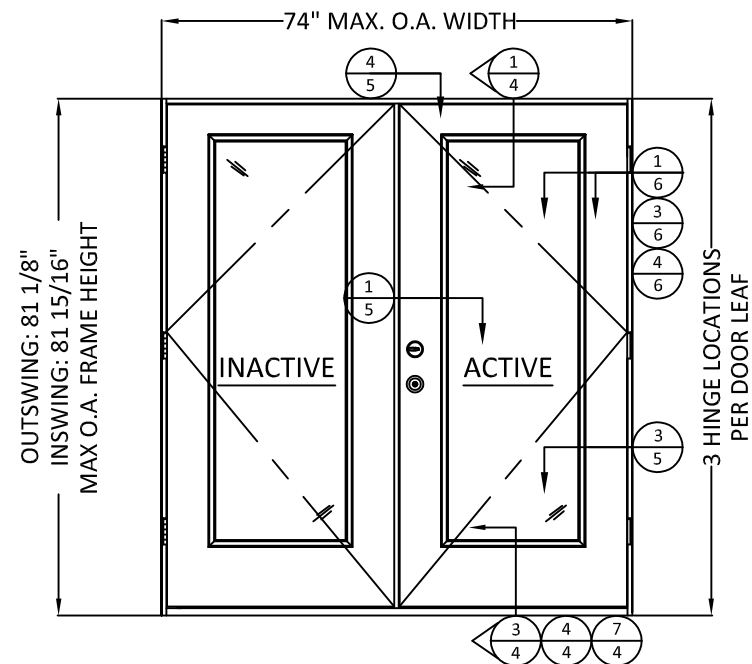
## WINDOWS & DOORS

### DESIGN PRO / SMOOTH PRO FULL LITE IMPACT APPROVED

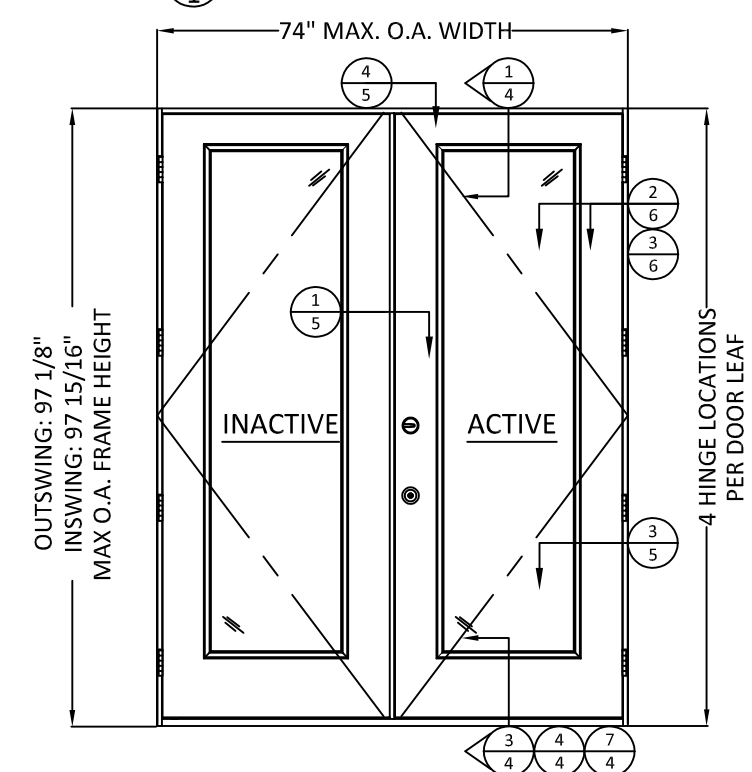
FOR USE OUTSIDE THE HIGH VELOCITY HURRICANE ZONE (HVHZ)

**GENERAL NOTES:**

- THE PRODUCT SHOWN HEREIN IS DESIGNED AND MANUFACTURED TO COMPLY WITH THE CURRENT INTERNATIONAL BUILDING CODE (IBC), INTERNATIONAL RESIDENTIAL CODE (IRC), AND FLORIDA BUILDING CODE (FBC), **EXCLUDING** HVHZ AND HAS BEEN EVALUATED ACCORDING TO THE FOLLOWING:
  - ASTM E283-04
  - ASTM E330-02
  - ASTM E1886-05
  - ASTM E1996-06
  - AAMA 1304-02
- ADEQUACY OF THE EXISTING STRUCTURAL CONCRETE/MASONRY OR 2X FRAMING AS A MAIN WIND FORCE RESISTING SYSTEM CAPABLE OF WITHSTANDING AND TRANSFERRING APPLIED PRODUCT LOADS TO THE FOUNDATION IS THE RESPONSIBILITY OF THE ENGINEER OR ARCHITECT OF RECORD FOR THE PROJECT OF INSTALLATION.
- THE INSTALLATION DETAILS DESCRIBED HEREIN ARE GENERIC AND MAY NOT REFLECT ACTUAL CONDITIONS FOR A SPECIFIC SITE. IF SITE CONDITIONS CAUSE INSTALLATION TO DEVIATE FROM THE REQUIREMENTS DETAILED HEREIN, A LICENSED ENGINEER OR ARCHITECT SHALL PREPARE SITE SPECIFIC DOCUMENTS FOR USE WITH THIS DOCUMENT.
- APPROVED IMPACT PROTECTIVE SYSTEM **IS NOT REQUIRED** ON THIS PRODUCT IN AREAS REQUIRING IMPACT RESISTANCE FOR WIND ZONE 3 OR LESS.
- GLASS MEETS THE REQUIREMENTS OF ASTM E 1300 GLASS CHARTS. SEE SHEET 6 FOR GLAZING DETAILS.
- FULL LITE APPROVAL COVERS USE OF FRACTIONAL GLAZING, INCLUDING INTERNAL GRID, BLINDS BETWEEN GLASS, DECORATIVE, EXTERNAL WROUGHT IRON AND RADIUS (SHAPED) LITES..
- NOTE: AFCO H-497 SILL MEETS WATER INFILTRATION AT WATER TEST PRESSURE (WTP) OF 9.0 PSF. REMAINING SILLS NOT RATED FOR WATER INFILTRATION. IF AUTHORITY HAVING JURISDICTION REQUIRES THAT PRODUCT MEETS THIS REQUIREMENT, PRODUCT SHALL BE USED WHEN INSTALLED AT LOCATION PROTECTED BY OVERHANG SUCH THAT OVERHANG (OH) RATIO = OH LENGTH ÷ OH HEIGHT IS ≥ 1.0



**1 TYP. ELEVATION 1**  
6'-8" DOOR HEIGHT



**2 TYP. ELEVATION 2**  
8'-0" DOOR HEIGHT

**NOTE:**  
INACTIVE AND ACTIVE DOOR PANEL ORIENTATION IS INTERCHANGEABLE.

TABLE OF CONTENTS		
SHEET	REVISION	SHEET DESCRIPTION
1	A	TYPICAL ELEVATIONS, DESIGN PRESSURES, AND GENERAL NOTES
2	A	TYPICAL ANCHOR LAYOUTS AND NOTES
3	-	OPTIONAL 2X BUCK ANCHORING DETAILS
4	-	VERTICAL ASSEMBLIES
5	A	HORIZONTAL ASSEMBLIES
6	A	GLAZING DETAILS
7	-	WOOD SUBSTRATES
8	-	CONCRETE SUBSTRATES
9	A	COMPONENTS & BILL OF MATERIALS

CONFIGURATION	MAX. OVERALL NOMINAL SIZE		DESIGN PRESSURE (PSF)				MISSILE IMPACT RATING
	WIDTH	HEIGHT	INSWING		OUTSWING		
			POS.	NEG.	POS.	NEG.	
XX	6'-0"	6'-8"	50*	50	50*	50	LMI & SMI
XX RADIUS	6'-0"	6'-8"	50*	50	50*	50	LMI & SMI
XX	6'-0"	8'-0"	50*	50	50*	50	LMI & SMI

\*SEE GENERAL NOTE 7, SHEET 1, FOR WATER INFILTRATION APPROVED SILLS.

PREPARED BY:  
  
**BUILDING DROPS, INC.**  
 398 E. DANIA BEACH BLVD., STE. 338  
 DANIA BEACH, FL 33004  
 PH: (954)399-8478  
 FAX: (954)744.4738  
 WEB: www.buildingdrops.com

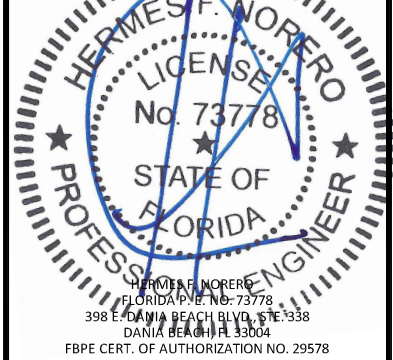
TITLE: DESIGN PRO/SMOOTH PRO FULL LITE  
IMPACT APPROVED  
TYPICAL ELEVATIONS, DESIGN PRESSURES, AND GENERAL NOTES

3737 LAKEPORT BLVD.,  
KLAMATH FALLS, OR 97601  
PH: (541)882-3451  
FAX: (541)850-2609

**JELD WEN**  
WINDOWS & DOORS

REMARKS	BY	DATE
Add Multi-Point Lock & Radius Lt	GL	06/23/14
Reference DWG. #A010854A	AM	09/04/19

THE INSTALLATION DETAILS DESCRIBED HEREIN ARE GENERIC AND MAY NOT REFLECT ACTUAL CONDITIONS FOR A SPECIFIC SITE. IF SITE CONDITIONS CAUSE INSTALLATION TO DEVIATE FROM THE REQUIREMENTS DETAILED HEREIN, A LICENSED ENGINEER OR ARCHITECT SHALL PREPARE SITE SPECIFIC DOCUMENTS FOR USE WITH THIS DOCUMENT.



DATE: **02.05.14**

DWG. BY: **GL/TJM** | CHK. BY: **SS/MSS**

SCALE: **NTS**

DWG. #: **D015697**

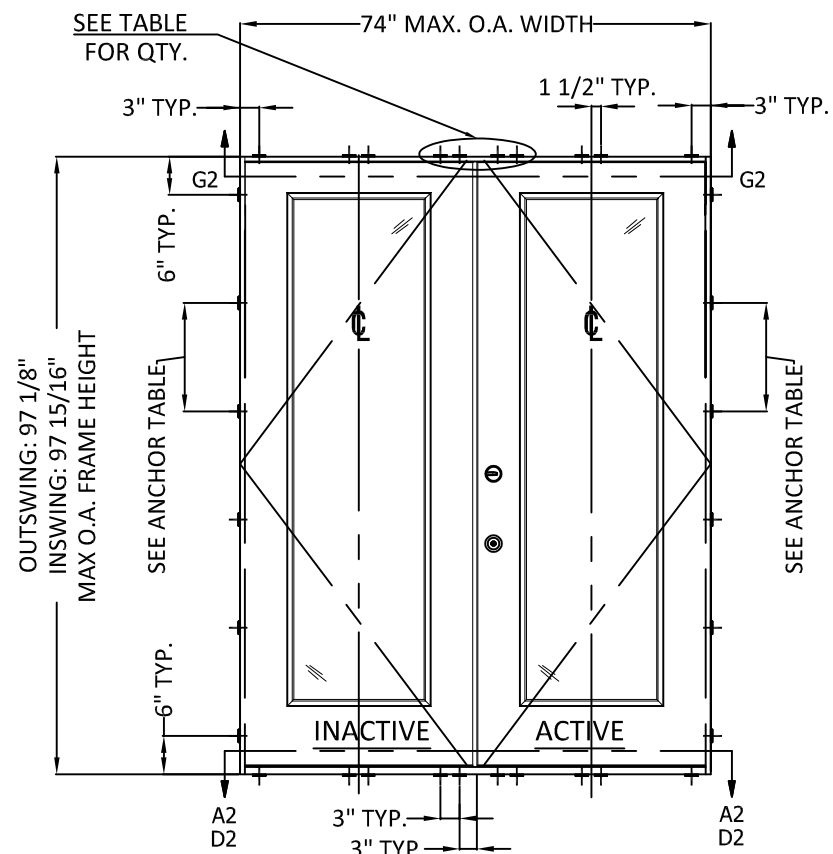
SHEET: **1** OF 9

**INSTALLATION NOTES:**

- ONE (1) INSTALLATION ANCHOR IS REQUIRED AT EACH ANCHOR LOCATION SHOWN.
- SHIM AS REQUIRED AT EACH INSTALLATION ANCHOR WITH LOAD BEARING SHIM(S). MAXIMUM ALLOWABLE SHIM STACK TO BE 1/4 INCH. SHIM WHERE SPACE OF 1/16 INCH OR GREATER OCCURS. SHIM(S) SHALL BE CONSTRUCTED OF HIGH DENSITY PLASTIC OR BETTER.
- MINIMUM EMBEDMENT AND EDGE DISTANCE EXCLUDE WALL FINISHES, INCLUDING BUT NOT LIMITED TO STUCCO, FOAM, BRICK VENEER, AND SIDING.
- INSTALLATION ANCHORS AND ASSOCIATED HARDWARE MUST BE MADE OF CORROSION RESISTANT MATERIAL OR HAVE A CORROSION RESISTANT COATING, AND SHALL BE INSTALLED IN ACCORDANCE WITH ANCHOR MANUFACTURER'S INSTALLATION INSTRUCTIONS.
- FOR HOLLOW BLOCK AND GROUT FILLED BLOCK, DO NOT INSTALL INSTALLATION ANCHORS INTO MORTAR JOINTS. EDGE DISTANCE IS MEASURED FROM FREE EDGE OF BLOCK OR EDGE OF MORTAR JOINT INTO FACE SHELL OF BLOCK.
- FOR 2X STUD CONSTRUCTION, ANCHORING OF THESE PRODUCTS SHALL BE THE SAME AS FOR 2X BUCK CONCRETE/MASONRY CONSTRUCTION.
- INSTALLATION ANCHOR CAPACITIES FOR PRODUCTS HEREIN ARE BASED ON SUBSTRATE MATERIALS WITH THE FOLLOWING PROPERTIES:
  - WOOD - MINIMUM SPECIFIC GRAVITY OF 0.55.
  - CONCRETE - MINIMUM COMPRESSIVE STRENGTH OF 3000 PSI.
  - GROUT-FILLED CMU- UNIT STRENGTH CONFORMS TO ASTM C-90 WITH MINIMUM COMPRESSIVE STRENGTH OF 2000 PSI AND GROUT CONFORMS TO ASTM C 476, MINIMUM GROUT COMPRESSIVE STRENGTH OF 2000 PSI.
  - HOLLOW BLOCK CMU - UNIT STRENGTH CONFORMS TO ASTM C-90 WITH MINIMUM COMPRESSIVE STRENGTH OF 2000 PSI.
- SEE SHEETS 7 AND 8 FOR MORE DETAILS OF THE INSTALLATION REQUIREMENTS, INCLUDING ANCHOR LOCATIONS, EDGE DISTANCES, EMBEDMENTS, AND SHIM SPACING.
- OPTIONALLY, ANCHORS CAN BE PLACED IN NARROW SECTION OF HEAD OR JAMB AS LONG AS MINIMUM EMBEDMENT AND EDGE DISTANCE ARE ACHIEVED.

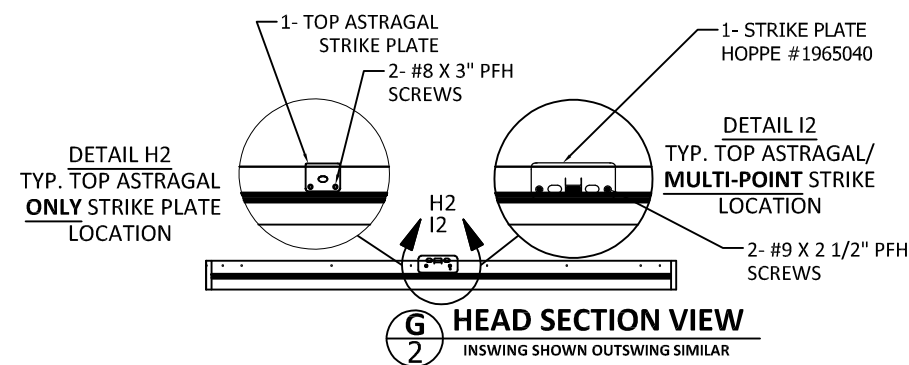
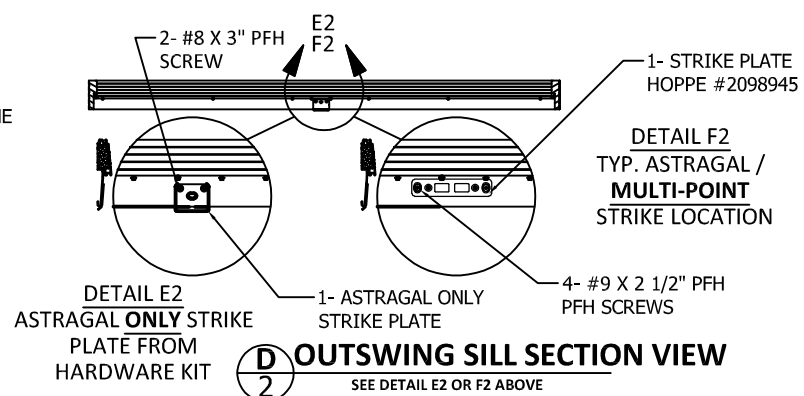
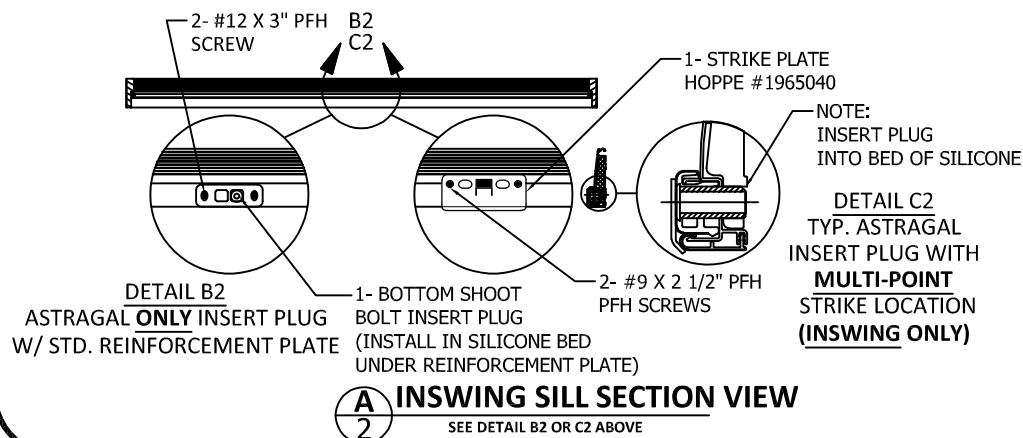
**ANCHOR TABLE**

ANCHOR TYPE	ANCHOR SIZE	SUBSTRATE	MIN. EMBEDMENT	MIN. EDGE DISTANCE	6'8" DOORS		8'0" DOORS	
					MAX. O.C. SPACING AT JAMBS	# OF ANCHORS AT HEAD/SILL CLUSTERS	MAX. O.C. SPACING AT JAMBS	# OF ANCHORS AT HEAD/SILL CLUSTERS
WOOD SCREW	#10	2X WOOD BUCK OR FRAMING	1-1/2"	3/4"	17-1/2"	4	17-1/4"	4
ITW TAPCON	3/16"	CONCRETE/CMU	1-1/4"	2-1/2"	17-1/2"	4	17-1/4"	4
ELCO ULTRACON	1/4"	CONCRETE/CMU	1-3/8" - CONC. 1-1/4" - CMU	1"	17-1/2"	4	17-1/4"	4
ITW TAPCON	3/16"	CONCRETE/CMU	1-1/4"	1"	11-5/8"	8	14-3/8"	6



**1 TYP. ANCHOR LAYOUT**  
6'-8" OR 8'-0" DOOR HEIGHT

NOTE:  
INACTIVE AND ACTIVE DOOR PANEL ORIENTATION IS INTERCHANGEABLE.



PREPARED BY:



**BUILDING DROPS, INC.**  
398 E. DANIA BEACH BLVD., STE. 338  
DANIA BEACH, FL 33004  
PH: (954)399-8478  
FAX: (954)744.4738  
WEB: www.buildingdrops.com

TITLE: DESIGN PRO/SMOOTH PRO FULL LITE  
IMPACT APPROVED

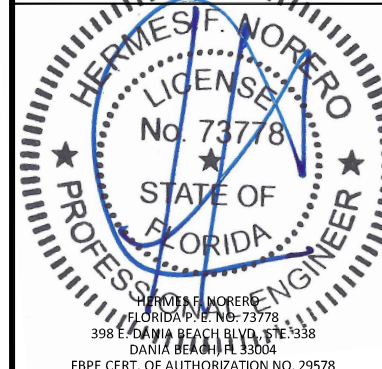
TYPICAL ANCHOR LAYOUTS AND NOTES

3737 LAKEPORT BLVD.,  
KLAMATH FALLS, OR 97601  
PH: (541)882-3451  
FAX: (541)850-2609

**JELD-WEN**  
WINDOWS & DOORS

REMARKS	BY	DATE
Add Multi-Point Lock & Radius Lt	GL	06/23/14
Reference DWG. #A010854A	AM	09/04/19

THE INSTALLATION DETAILS DESCRIBED HEREIN ARE GENERIC AND MAY NOT REFLECT ACTUAL CONDITIONS FOR A SPECIFIC SITE. IF SITE CONDITIONS CAUSE INSTALLATION TO DEVIATE FROM THE REQUIREMENTS DETAILED HEREIN, A LICENSED ENGINEER OR ARCHITECT SHALL PREPARE SITE SPECIFIC DOCUMENTS FOR USE WITH THIS DOCUMENT.



DATE: 02.05.14

DWG. BY: GL/TJM  
CHK. BY: SS/MSS

SCALE: NTS

DWG. #: D015697

SHEET: 2 OF 9

PREPARED BY:

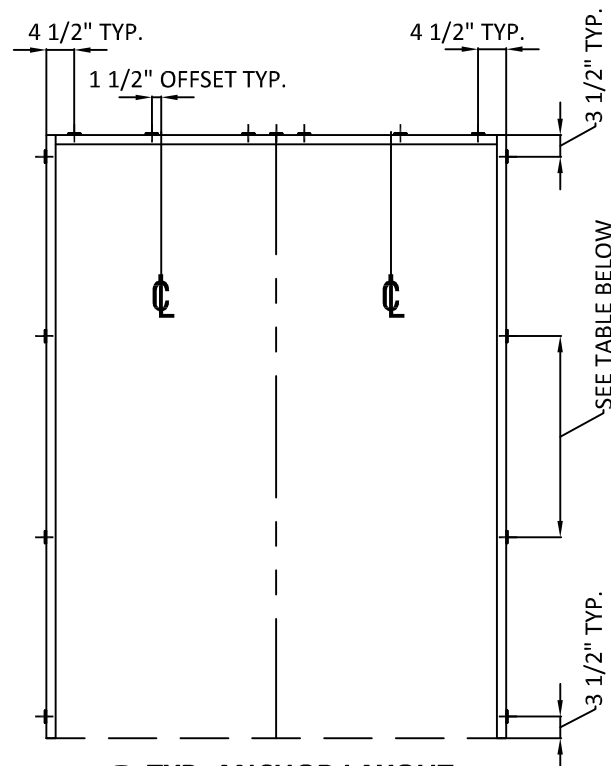


**BUILDING DROPS, INC.**  
 398 E. DANIA BEACH BLVD., STE. 338  
 DANIA BEACH, FL 33004  
 PH: (954)399-8478  
 FAX: (954)744.4738  
 WEB: www.buildingdrops.com

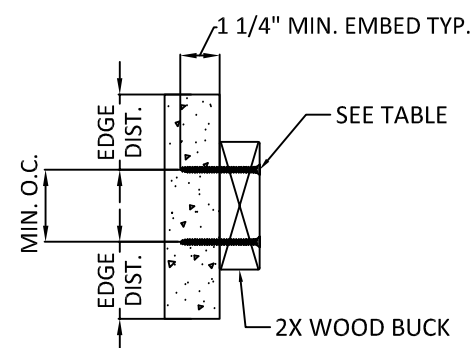
TITLE: DESIGN PRO/SMOOTH PRO FULL LITE  
 IMPACT APPROVED  
 OPTIONAL 2X BUCK  
 ANCHORING DETAILS

3737 LAKEPORT BLVD.,  
 KLAMATH FALLS, OR 97601  
 PH: (541)882-3451  
 FAX: (541)850-2609

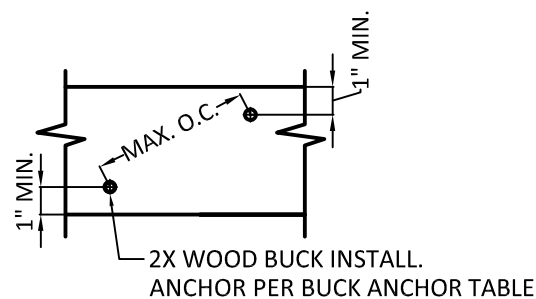
**JELD WEN**  
 WINDOWS & DOORS



**1** TYP. ANCHOR LAYOUT  
**3** OPTIONAL 2X BUCK IN CONCRETE/MASONRY



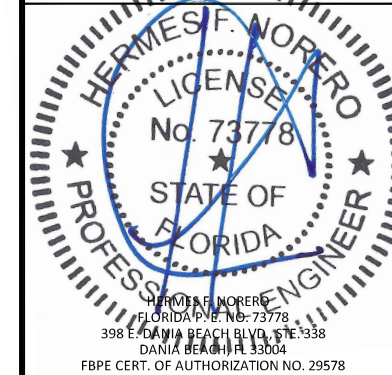
**3** 2X WOOD BUCK INSTALL.  
 CROSS SECTION



**4** 2X WOOD BUCK INSTALL.  
 SIDE VIEW

2X BUCK ANCHOR TABLE							
ANCHOR TYPE	ANCHOR SIZE	SUBSTRATE	MIN. EMBEDMENT	MIN. EDGE DIST. TO SUBSTRATE	MIN. CENTER TO CENTER DISTANCE	6'8" DOORS	8'0" DOORS
						MAX. O.C. SPACING AT JAMBS	MAX. O.C. SPACING AT JAMBS
ITW TAPCON	1/4"	CONCRETE/CMU	1-1/4"	2-1/2"	4"	25"	30-1/4"
ELCO ULTRACON	1/4"	CONCRETE/CMU	1-3/8" - CONC. 1-1/4" - CMU	1"	4"	25"	30-1/4"

THE INSTALLATION DETAILS DESCRIBED HEREIN ARE GENERIC AND MAY NOT REFLECT ACTUAL CONDITIONS FOR A SPECIFIC SITE. IF SITE CONDITIONS CAUSE INSTALLATION TO DEVIATE FROM THE REQUIREMENTS DETAILED HEREIN, A LICENSED ENGINEER OR ARCHITECT SHALL PREPARE SITE SPECIFIC DOCUMENTS FOR USE WITH THIS DOCUMENT.



DATE: 02.05.14

DWG. BY: GL/TJM | CHK. BY: SS/MSS

SCALE: NTS

DWG. #: D015697

SHEET: OF 9

NOTES:

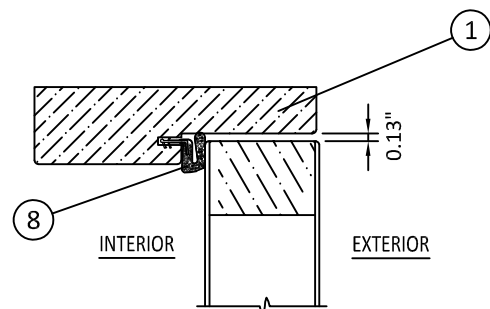
1. 2X BUCK IS NOT FOR INSTALLATION AT SILL. THRESHOLD SHALL BE FASTENED IN ACCORDANCE WITH ANCHOR LOCATIONS SHOWN ON SHEET 2.
2. ANCHORS MAY BE STAGGERED AS SHOWN IN DETAIL 4/3.

PREPARED BY:

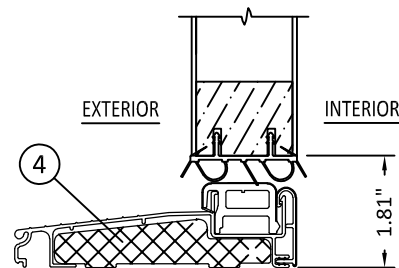


**BUILDING DROPS, INC.**

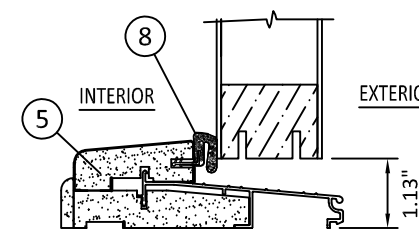
398 E. DANIA BEACH BLVD., STE. 338  
DANIA BEACH, FL 33004  
PH: (954)399-8478  
FAX: (954)744.4738  
WEB: www.buildingdrops.com



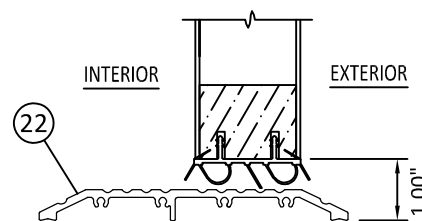
**1**  
**4** **OPERABLE HEAD**  
OUTSWING SHOWN - INSWING SIMILAR



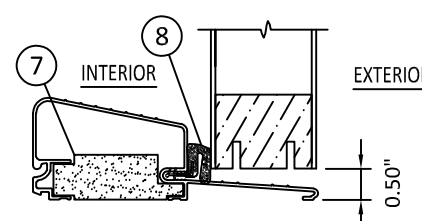
**3**  
**4** **OPERABLE SILL**  
INSWING



**4**  
**4** **OPERABLE SILL**  
OUTSWING



**5**  
**4** **OPERABLE ADA SILL**  
INSWING/OUTSWING



**7**  
**4** **OPERABLE SILL**  
OUTSWING  
OPTIONAL AFCO H-497

TITLE: DESIGN PRO/SMOOTH PRO FULL LITE  
IMPACT APPROVED

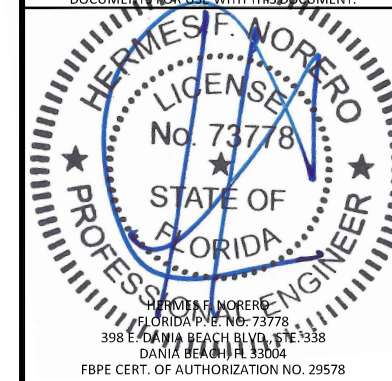
VERTICAL ASSEMBLIES

3737 LAKEPORT BLVD.,  
KLAMATH FALLS, OR 97601  
PH: (541)882-3451  
FAX: (541)850-2609

**JELD-WEN**  
WINDOWS & DOORS

REMARKS	BY	DATE
Add Multi-Point Lock & Radius Lt	GL	06/23/14
Reference DWG. #A010854A	AM	09/04/19

THE INSTALLATION DETAILS DESCRIBED HEREIN ARE GENERIC AND MAY NOT REFLECT ACTUAL CONDITIONS FOR A SPECIFIC SITE. IF SITE CONDITIONS CAUSE INSTALLATION TO DEVIATE FROM THE REQUIREMENTS DETAILED HEREIN, A LICENSED ENGINEER OR ARCHITECT SHALL PREPARE SITE SPECIFIC DOCUMENTS FOR USE WITH THIS DOCUMENT.



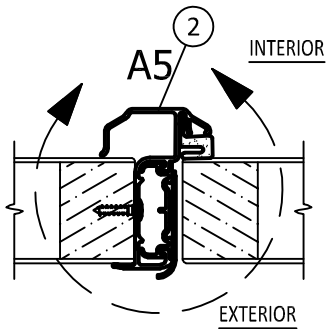
DATE: 02.05.14

DWG. BY: GL/TJM      CHK. BY: SS/MSS

SCALE: NTS

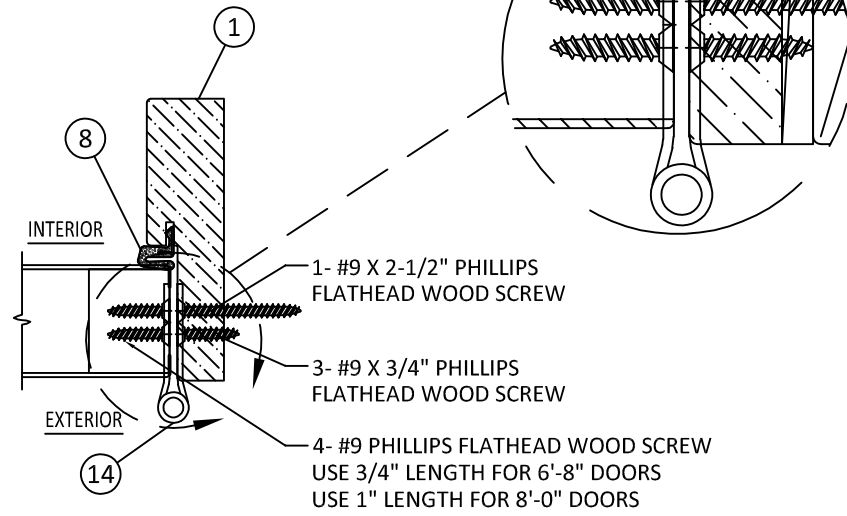
DWG. #: D015697

SHEET: 4 OF 9



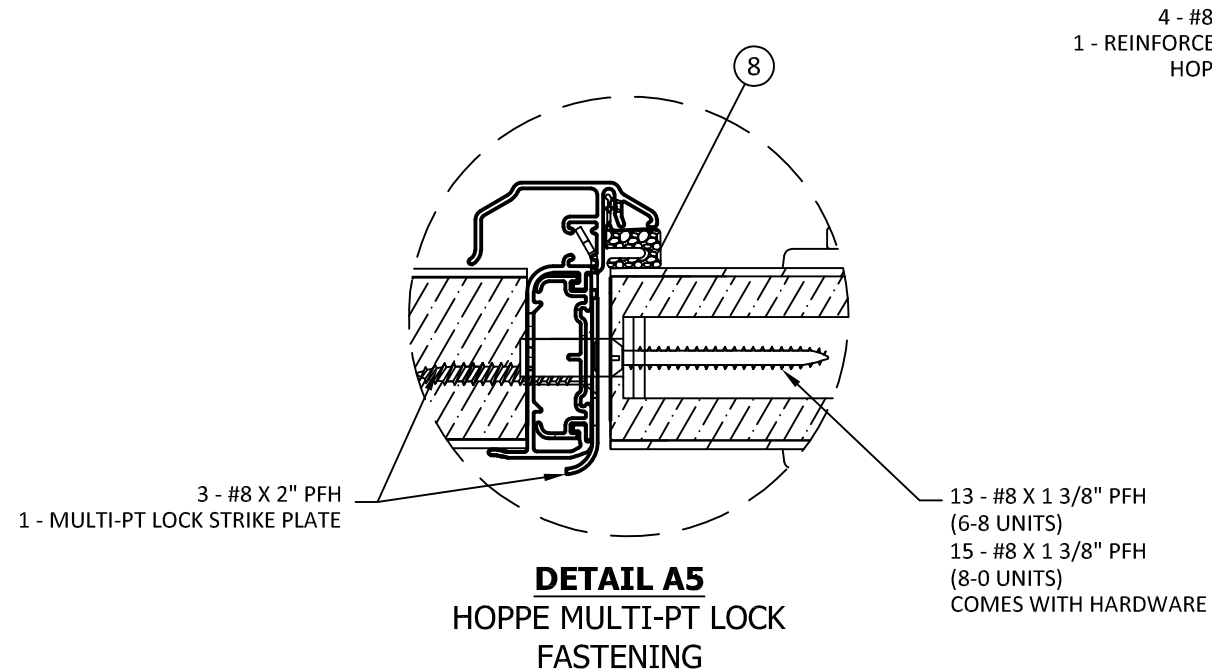
HINGE SCHEDULE	
DOOR HEIGHT	QUANTITY
6'-8"	3
8'-0"	4

HINGE DETAIL AT JAMB:  
PLACE #9 X 2-1/2" PFH SCREW NEXT TO WEATHERSTRIP

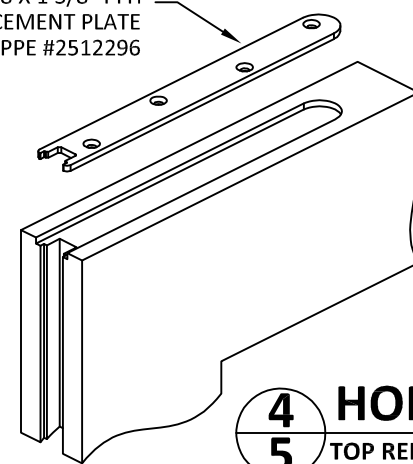


**1**  
**5** MEETING STILE  
OUTSWING SHOWN - INSWING SIMILAR

**3**  
**5** HINGE JAMB  
OUTSWING SHOWN - INSWING SIMILAR



4 - #8 X 1 3/8" PFH  
1 - REINFORCEMENT PLATE  
HOPPE #2512296



**4**  
**5** HOPPE MULTI-POINT LOCK  
TOP REINFORCEMENT PLATE - ACTIVE PANEL ONLY

PREPARED BY:



**BUILDING DROPS, INC.**  
398 E. DANIA BEACH BLVD., STE. 338  
DANIA BEACH, FL 33004  
PH: (954)399-8478  
FAX: (954)744.4738  
WEB: www.buildingdrops.com

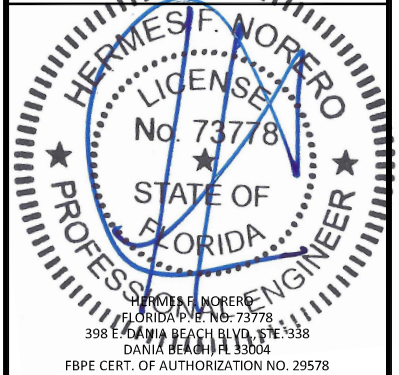
TITLE: DESIGN PRO/SMOOTH PRO FULL LITE  
IMPACT APPROVED  
WOOD SUBSTRATES

3737 LAKEPORT BLVD.,  
KLAMATH FALLS, OR 97601  
PH: (541)882-3451  
FAX: (541)850-2609

**JELD-WEN**  
WINDOWS & DOORS

REMARKS	BY	DATE
Add Multi-Point Lock & Radius Lt	GL	06/23/14
Reference DWG. #A010854A	AM	09/04/19

THE INSTALLATION DETAILS DESCRIBED HEREIN ARE GENERIC AND MAY NOT REFLECT ACTUAL CONDITIONS FOR A SPECIFIC SITE. IF SITE CONDITIONS CAUSE INSTALLATION TO DEVIATE FROM THE REQUIREMENTS DETAILED HEREIN, A LICENSED ENGINEER OR ARCHITECT SHALL PREPARE SITE SPECIFIC DOCUMENTS FOR USE WITH THIS DOCUMENT.



DATE: 02.05.14

DWG. BY: GL/TJM  
CHK. BY: SS/MSS

SCALE: NTS

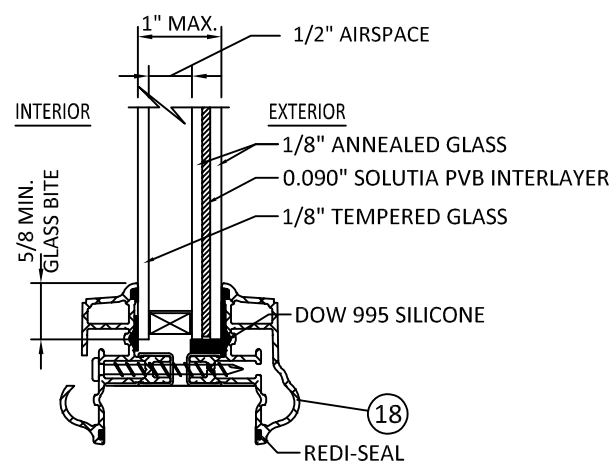
DWG. #: D015697

SHEET: 5 OF 9

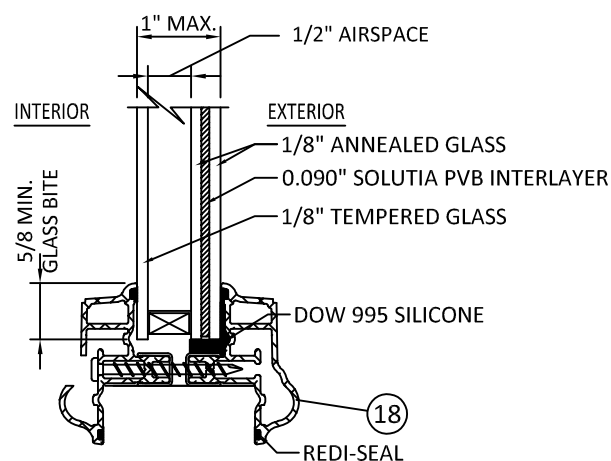
PREPARED BY:



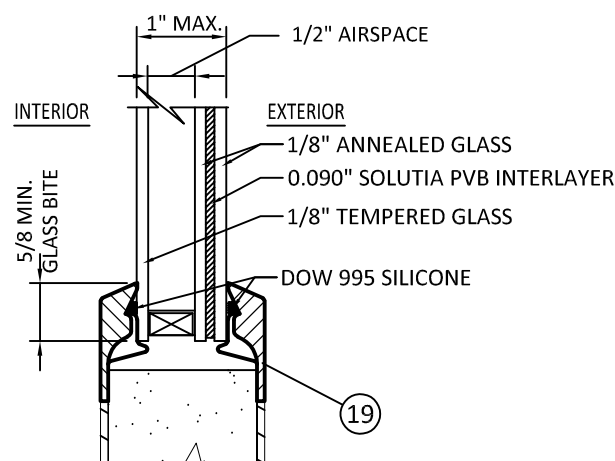
**BUILDING DROPS, INC.**  
 398 E. DANIA BEACH BLVD., STE. 338  
 DANIA BEACH, FL 33004  
 PH: (954)399-8478  
 FAX: (954)744.4738  
 WEB: www.buildingdrops.com



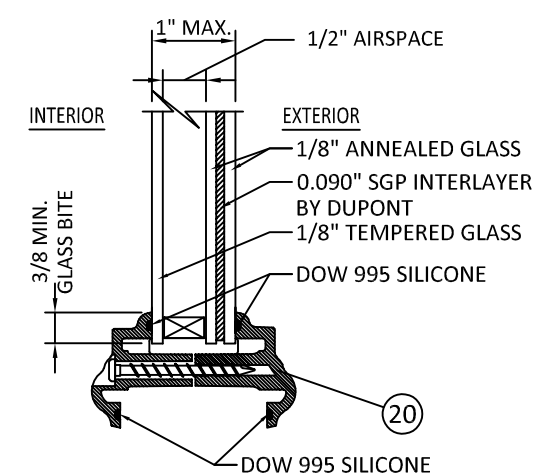
**1** **6'-8" GLAZING DETAIL**  
**6** 20 1/2" MAX. D.L.O. WIDTH  
 62 1/2" MAX. D.L.O. HEIGHT



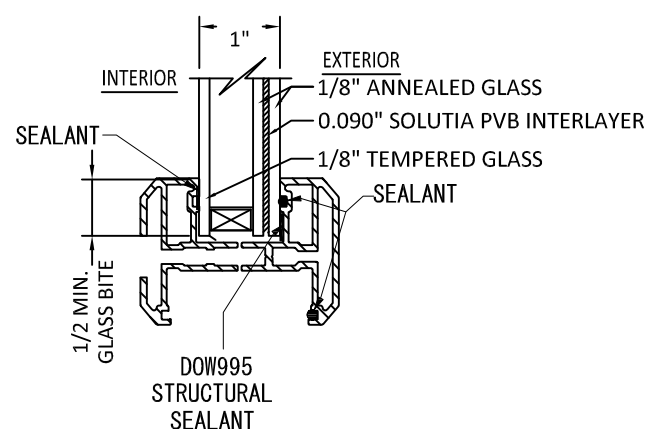
**2** **8'-0" GLAZING DETAIL**  
**6** 20 1/2" MAX. D.L.O. WIDTH  
 78 1/2" MAX. D.L.O. HEIGHT



**3** **FLUSH GLAZE DETAIL**  
**6** 23 7/8" MAX. D.L.O. WIDTH  
 78 7/8" MAX. D.L.O. HEIGHT



**4** **GLAZING DETAIL**  
**6** FOR OVAL, SUNBURST, AND ROUND TOPS  
 IN 6'8" UNITS AT DP+/- 50 PSF ONLY



**5** **GLAZING DETAIL OPTION**  
**6** 20 1/2" MAX D.L.O. WIDTH  
 78 1/2" MAX D.L.O. HEIGHT  
 3-0 X 6-8 - DP 50  
 6-0 X 6-8 - DP 60  
 3-0 X 8-0 - DP 50  
 6-0 X 8-0 - DP 45

**NOTE:**  
 FRACTIONAL GLAZING, INCLUDING INTERNAL GRID, BLINDS BETWEEN GLASS, DECORATIVE, EXTERNAL WROUGHT IRON AND RADIUS (SHAPED) LITES ARE APPROVED IN ALL GLAZING DETAILS SHOWN ABOVE.

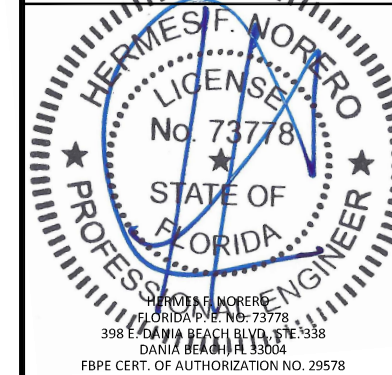
TITLE: DESIGN PRO/SMOOTH PRO FULL LITE  
 IMPACT APPROVED  
 HORIZONTAL ASSEMBLIES,  
 GLAZING DETAIL

3737 LAKEPORT BLVD.,  
 KLAMATH FALLS, OR 97601  
 PH: (541)882-3451  
 FAX: (541)850-2609

**JELD-WEN**  
 WINDOWS & DOORS

REMARKS	BY	DATE
Add Multi-Point Lock & Radius Lt	GL	06/23/14
Reference DWG. #A010854A	AM	09/04/19

THE INSTALLATION DETAILS DESCRIBED HEREIN ARE GENERIC AND MAY NOT REFLECT ACTUAL CONDITIONS FOR A SPECIFIC SITE. IF SITE CONDITIONS CAUSE INSTALLATION TO DEVIATE FROM THE REQUIREMENTS DETAILED HEREIN, A LICENSED ENGINEER OR ARCHITECT SHALL PREPARE SITE SPECIFIC DOCUMENTS FOR USE WITH THIS DOCUMENT.



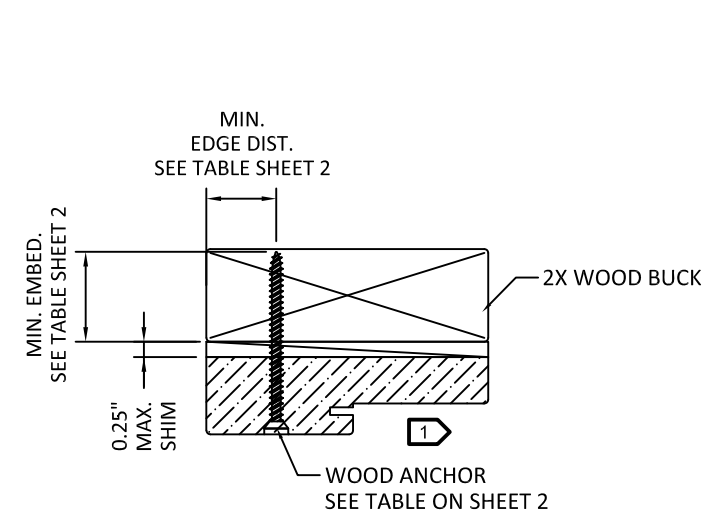
DATE: 02.05.14  
 DWG. BY: GL/TJM | CHK. BY: SS/MSS  
 SCALE: NTS  
 DWG. #: D015697  
 SHEET: OF 9

PREPARED BY:

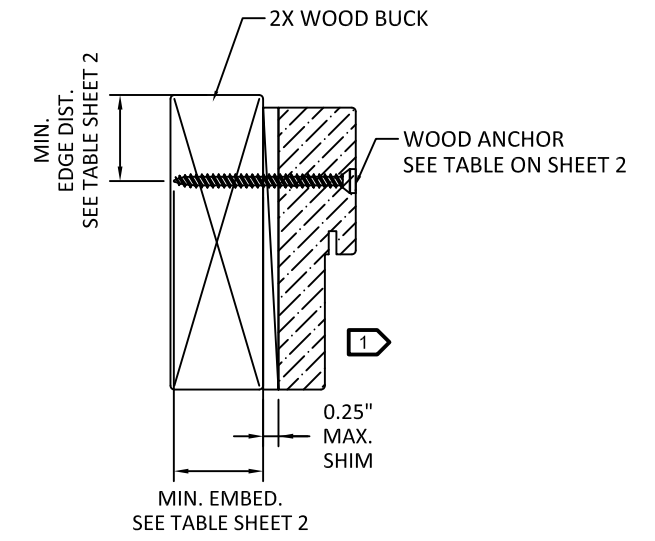
**BUILDING DROPS, INC.**  
 398 E. DANIA BEACH BLVD., STE. 338  
 DANIA BEACH, FL 33004  
 PH: (954)399-8478  
 FAX: (954)744.4738  
 WEB: www.buildingdrops.com

TITLE: **DESIGN PRO/SMOOTH PRO FULL LITE  
 IMPACT APPROVED  
 WOOD SUBSTRATES**

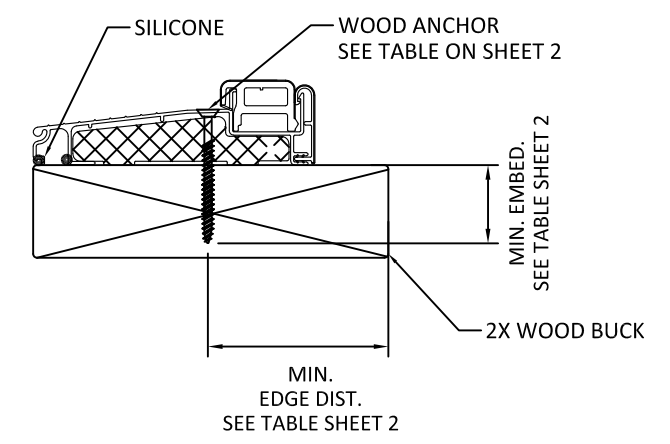
3737 LAKEPORT BLVD.,  
 KLAMATH FALLS, OR 97601  
 PH: (541)882-3451  
 FAX: (541)850-2609



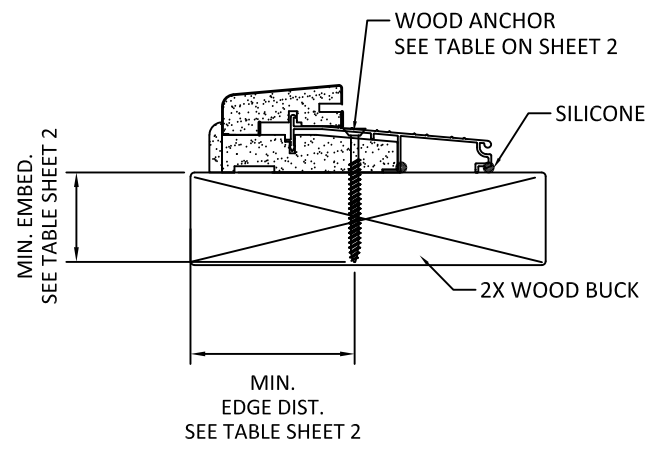
**1**  
**7** **HEAD (TYPICAL)**  
 OUTSWING SHOWN - INSWING SIMILAR



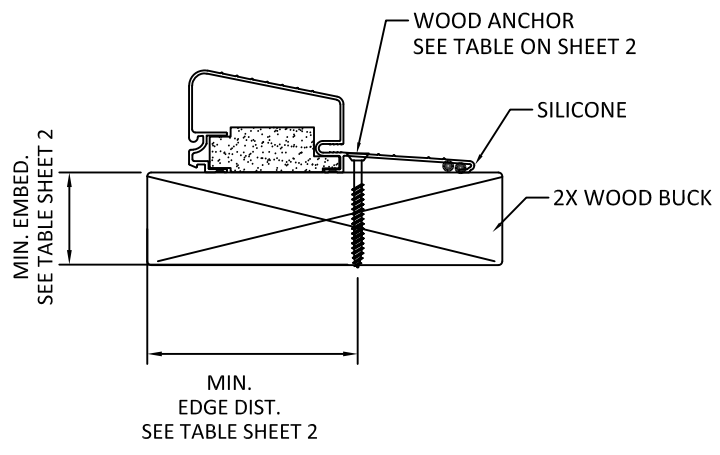
**2**  
**7** **JAMB (TYPICAL)**  
 OUTSWING SHOWN - INSWING SIMILAR



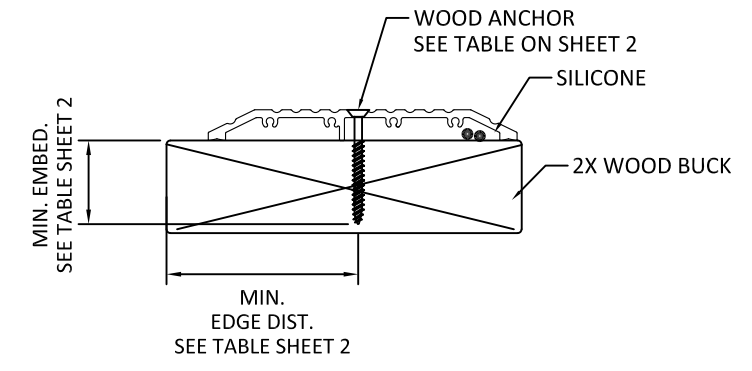
**3**  
**7** **OPERABLE SILL**  
 INSWING



**4**  
**7** **OPERABLE SILL**  
 OUTSWING



**5**  
**7** **OPERABLE SILL**  
 HIGH BUMP OUTSWING  
 AFCO H-497

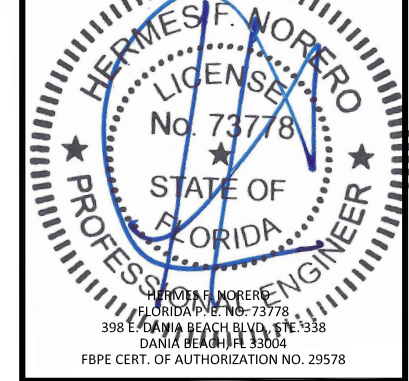


**6**  
**7** **ADA THRESHOLD**

1 OPTIONALLY, ANCHOR CAN BE PLACED IN NARROW SECTION OF HEAD OR JAMB AS LONG AS MINIMUM EMBEDMENT AND EDGE DISTANCE ARE ACHIEVED.

REMARKS	BY	DATE
Add Multi-Point Lock & Radius Lt	GL	06/23/14
Reference DWG. #A010854A	AM	09/04/19

THE INSTALLATION DETAILS DESCRIBED HEREIN ARE GENERIC AND MAY NOT REFLECT ACTUAL CONDITIONS FOR A SPECIFIC SITE. IF SITE CONDITIONS CAUSE INSTALLATION TO DEVIATE FROM THE REQUIREMENTS DETAILED HEREIN, A LICENSED ENGINEER OR ARCHITECT SHALL PREPARE SITE SPECIFIC DOCUMENTS FOR USE WITH THIS DOCUMENT.



HERMES F. NORERO  
 FLORIDA P.E. No. 73778  
 398 E. DANIA BEACH BLVD., STE. 338  
 DANIA BEACH, FL 33004  
 FBPE CERT. OF AUTHORIZATION NO. 29578

DATE:	02.05.14
DWG. BY:	GL/TJM
CHK. BY:	SS/MSS
SCALE:	NTS
DWG. #:	D015697
SHEET:	09

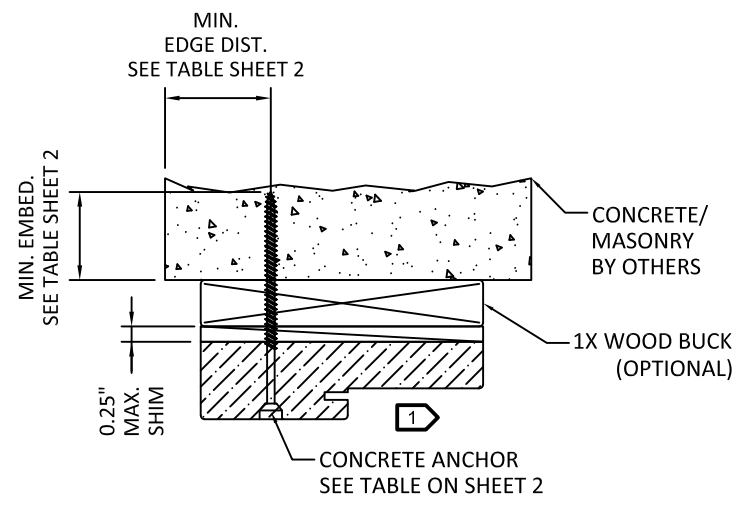
PREPARED BY:

**BUILDING DROPS, INC.**  
 398 E. DANIA BEACH BLVD., STE. 338  
 DANIA BEACH, FL 33004  
 PH: (954)399-8478  
 FAX: (954)744.4738  
 WEB: www.buildingdrops.com

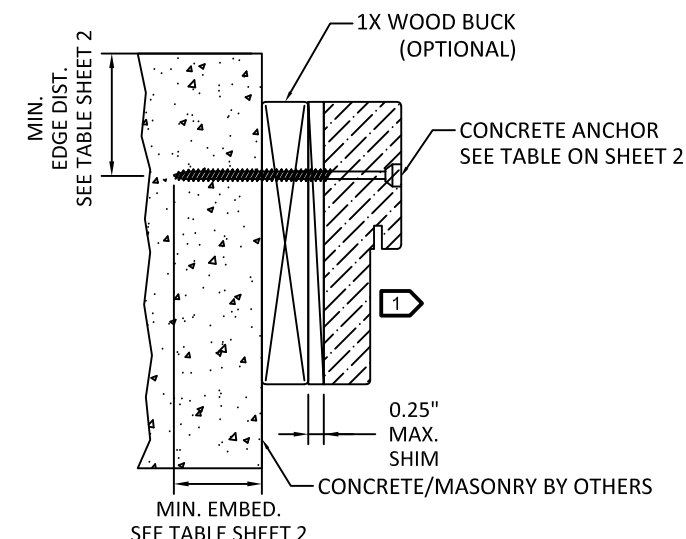
TITLE: **DESIGN PRO/SMOOTH PRO FULL LITE  
 IMPACT APPROVED  
 CONCRETE SUBSTRATES**

3737 LAKEPORT BLVD.,  
 KLAMATH FALLS, OR 97601  
 PH: (541)882-3451  
 FAX: (541)850-2609

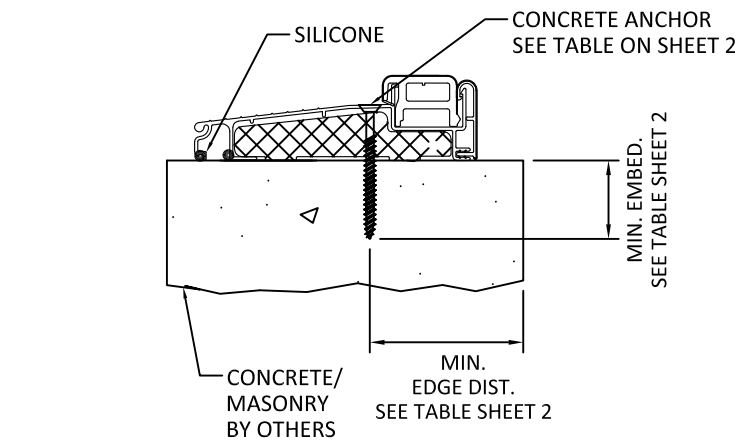
...updates for updates (add name, date, 2012).indg



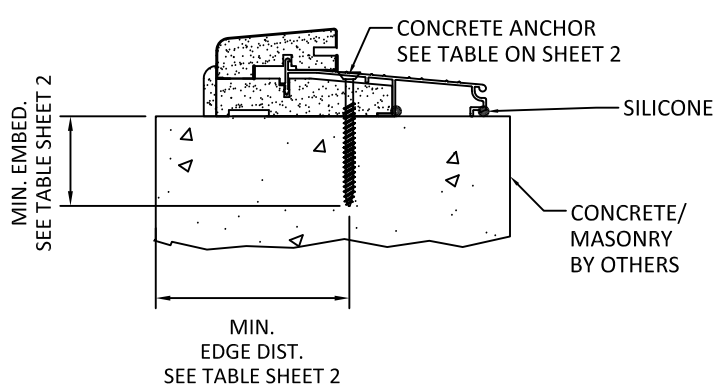
**1**  
**8** **HEAD (TYPICAL)**  
 OUTSWING SHOWN - INSWING SIMILAR



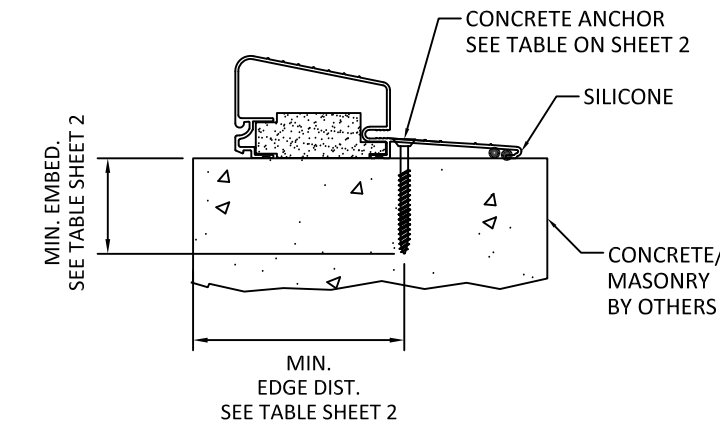
**2**  
**8** **JAMB (TYPICAL)**  
 OUTSWING SHOWN - INSWING SIMILAR



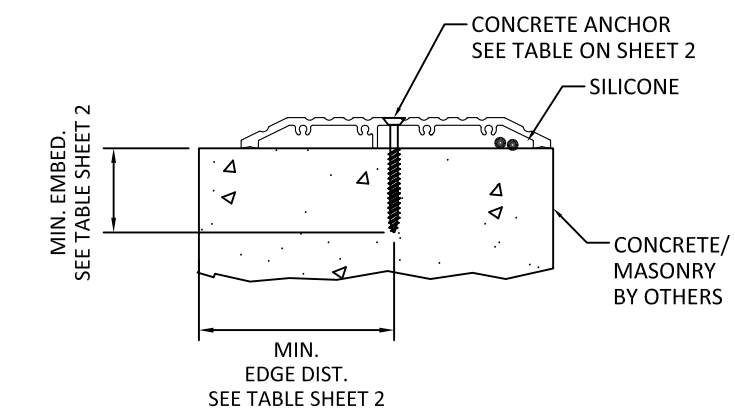
**3**  
**8** **OPERABLE SILL**  
 INSWING



**4**  
**8** **OPERABLE SILL**  
 OUTSWING



**5**  
**8** **OPERABLE SILL**  
 HIGH BUMP OUTSWING  
 AFCA H-497

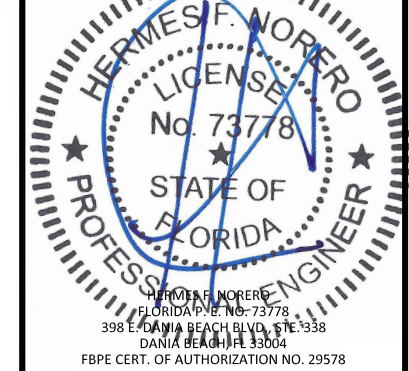


**6**  
**8** **ADA THRESHOLD**

1 OPTIONALLY, ANCHOR CAN BE PLACED IN NARROW SECTION OF HEAD OR JAMB AS LONG AS MINIMUM EMBEDMENT AND EDGE DISTANCE ARE ACHIEVED.

REMARKS	BY	DATE
Add Multi-Point Lock & Radius Lt	GL	06/23/14
Reference DWG. #A010854A	AM	09/04/19

THE INSTALLATION DETAILS DESCRIBED HEREIN ARE GENERIC AND MAY NOT REFLECT ACTUAL CONDITIONS FOR A SPECIFIC SITE. IF SITE CONDITIONS CAUSE INSTALLATION TO DEVIATE FROM THE REQUIREMENTS DETAILED HEREIN, A LICENSED ENGINEER OR ARCHITECT SHALL PREPARE SITE SPECIFIC DOCUMENTS FOR USE WITH THIS DOCUMENT.

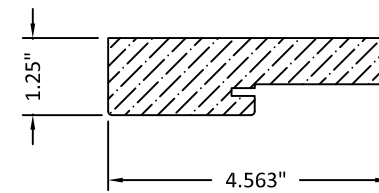


DATE:	02.05.14
DWG. BY:	GL/TJM
CHK. BY:	SS/MSS
SCALE:	NTS
DWG. #:	D015697
SHEET:	0F9

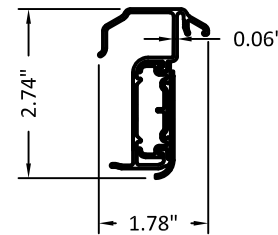


BILL OF MATERIALS		
ITEM#	DESCRIPTION	MATERIAL
1	FRAME HEAD/JAMBS	FINGER-JOINTED PINE
		SOLID PINE
		LAMINATED VENEER LUMBER
		COMPOSITE
2	ASTRAGAL, ENDURA ULTIMATE HURRICANE (SEE SHEET 2 FOR HARDWARE AND FASTENING DETAILS)	6063-T6 ALUMINUM
3	(NOT USED)	-
4	THRESHOLD	-
5	THRESHOLD	-
6	(NOT USED)	-
7	AFCO H-497 THRESHOLD	-
8	WEATHERSTRIP	URETHANE FOAM & POLYETHYLENE
9	NON-COMPRESSION SHIM (0.25" MAX. THK.)	COMPOSITE
10	(NOT USED)	WOOD
11	(NOT USED)	WOOD
12	#10 WOOD INSTALLATION SCREW W/ 1 1/2" MIN. EMBEDMENT	STEEL
13	CONC./CMU ANCHOR (SEE ANCHOR TABLE SHEETS 2 & 3)	STEEL
14	BUTT HINGE (SEE SCHEDULE SHEET 5)	-
15	LOCK SERIES 400	STEEL
16	DEADBOLT SERIES 780	STEEL
17	HOPPE MULTI-POINT HARDWARE HLS9000 (SEE SHEET 2 FOR HARDWARE AND FASTENING DETAILS)	STEEL
18	ODL LITE KIT (LMI)	6063-T6 ALUMINUM
19	FLUSH GLAZING LEG	FIBERGLASS
20	ODL LIPLITE KIT (RADIUS LITES)	PC ABS
21	PU DOOR CORE	
22	ADA THRESHOLD	

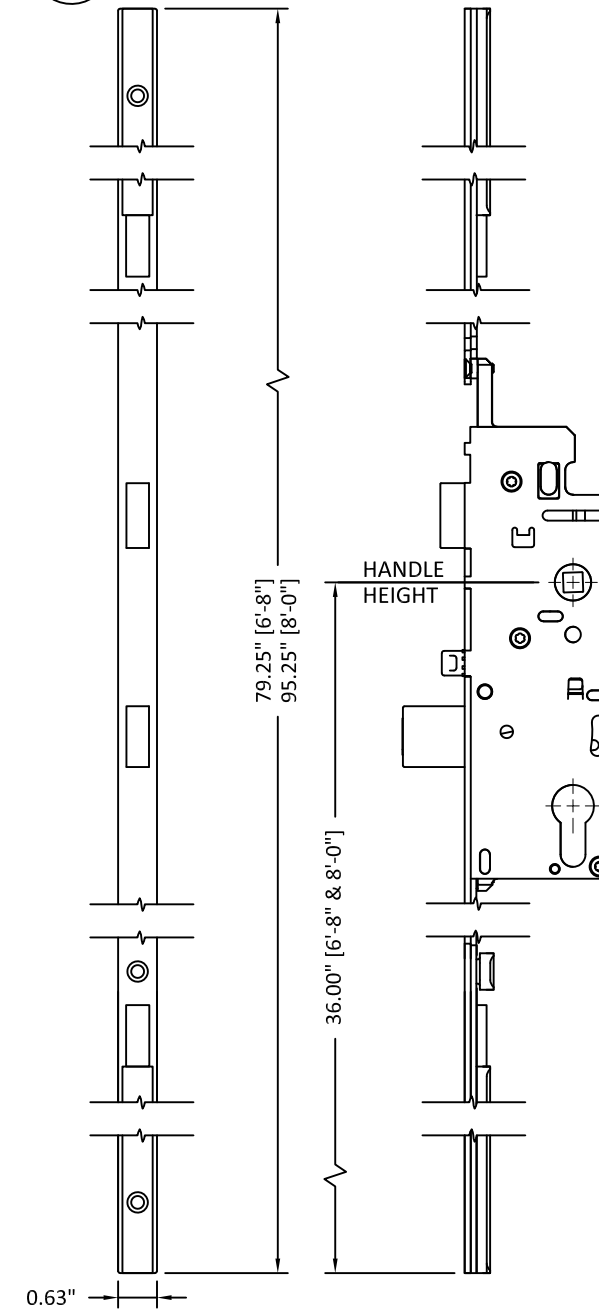
1 FRAME HEAD/JAMBS  
VARIES, SEE BOM AT LEFT



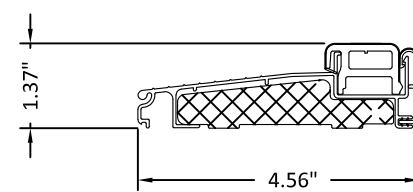
2 ENDURA ASTRAGAL  
ALUMINUM



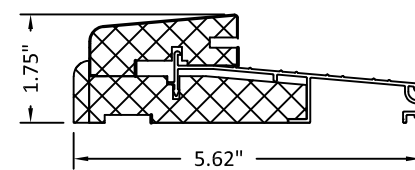
17 HOPPE MULTI-POINT LOCK



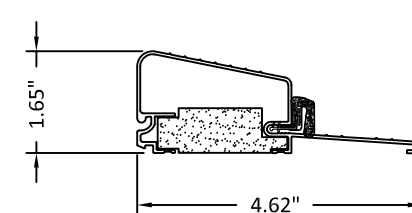
4 THRESHOLD



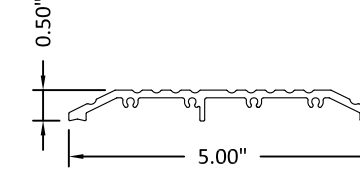
5 THRESHOLD



7 AFCO H-497 THRESHOLD



22 ADA THRESHOLD



PREPARED BY:

**BUILDING DROPS, INC.**  
398 E. DANIA BEACH BLVD., STE. 338  
DANIA BEACH, FL 33004  
PH: (954)399-8478  
FAX: (954)744.4738  
WEB: www.buildingdrops.com

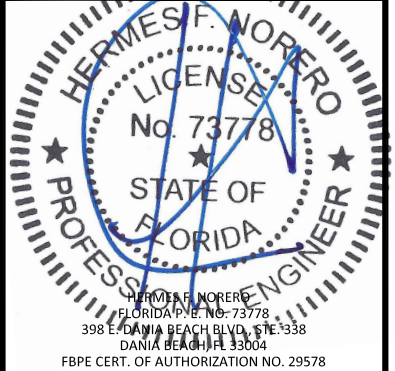
TITLE: DESIGN PRO/SMOOTH PRO FULL LITE  
IMPACT APPROVED

COMPONENTS AND BILL OF MATERIALS

3737 LAKEPORT BLVD.,  
KLAMATH FALLS, OR 97601  
PH: (541)882-3451  
FAX: (541)850-2609

REMARKS	BY	DATE
Add Multi-Point Lock & Radius Lt	GL	06/23/14
Reference DWG. #A010854A	AM	09/04/19

THE INSTALLATION DETAILS DESCRIBED HEREIN ARE GENERIC AND MAY NOT REFLECT ACTUAL CONDITIONS FOR A SPECIFIC SITE. IF SITE CONDITIONS CAUSE INSTALLATION TO DEVIATE FROM THE REQUIREMENTS DETAILED HEREIN, A LICENSED ENGINEER OR ARCHITECT SHALL PREPARE SITE SPECIFIC DOCUMENTS FOR USE WITH THIS DOCUMENT.



HERMES F. NORERO  
FLORIDA P.E. NO. 73778  
398 E. DANIA BEACH BLVD., STE. 338  
DANIA BEACH, FL 33004  
FBPE CERT. OF AUTHORIZATION NO. 29578

DATE: 02.05.14	
DWG. BY: GL/TJM	CHK. BY: SS/MSS
SCALE: NTS	
DWG. #: D015697	
SHEET: 9 OF 9	